

HIGH SCHOOL SW REGION SOCCER VENUES

Alamogordo

The location indicated in Dragonfly is correct – Riner Steinhoff Soccer Complex



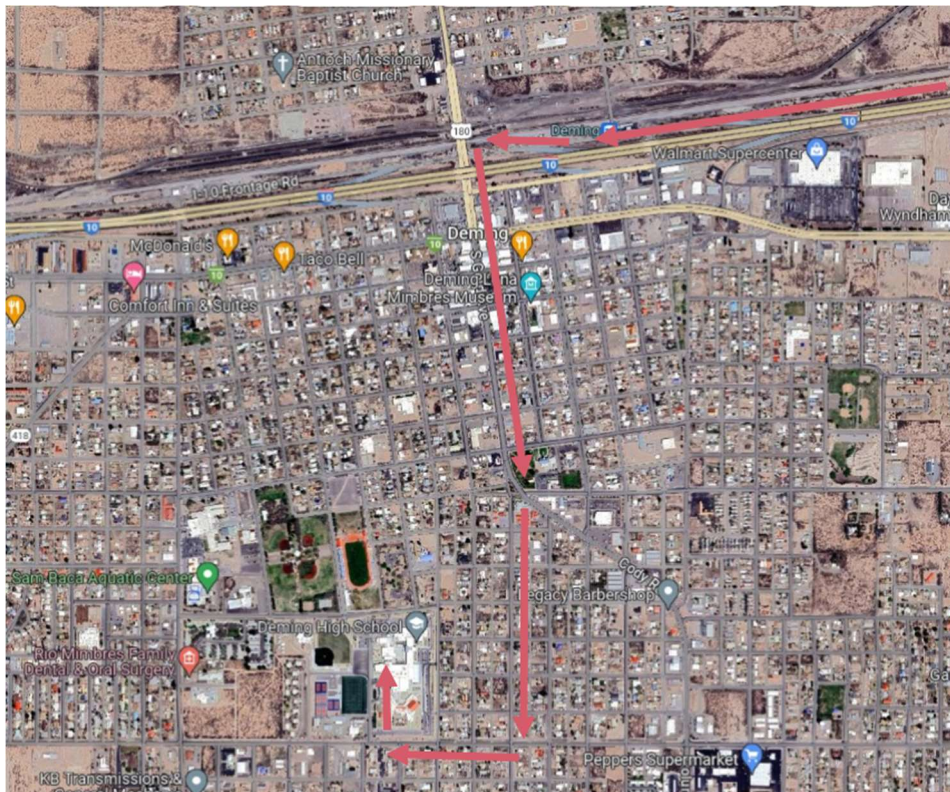
Chaparral

Don't park in the main school parking lot. Park in the dirt lot to the east of the football/soccer stadium.



Deming

This is probably the simplest route, but others are almost as good.



Gadsden

Use the northernmost entrance to the parking lot (might be marked “Busses Only”)



Hatch

Park in parking area immediately adjacent to the field. You don't need to drive through the school. It's easier to take Canal St.



Las Cruces

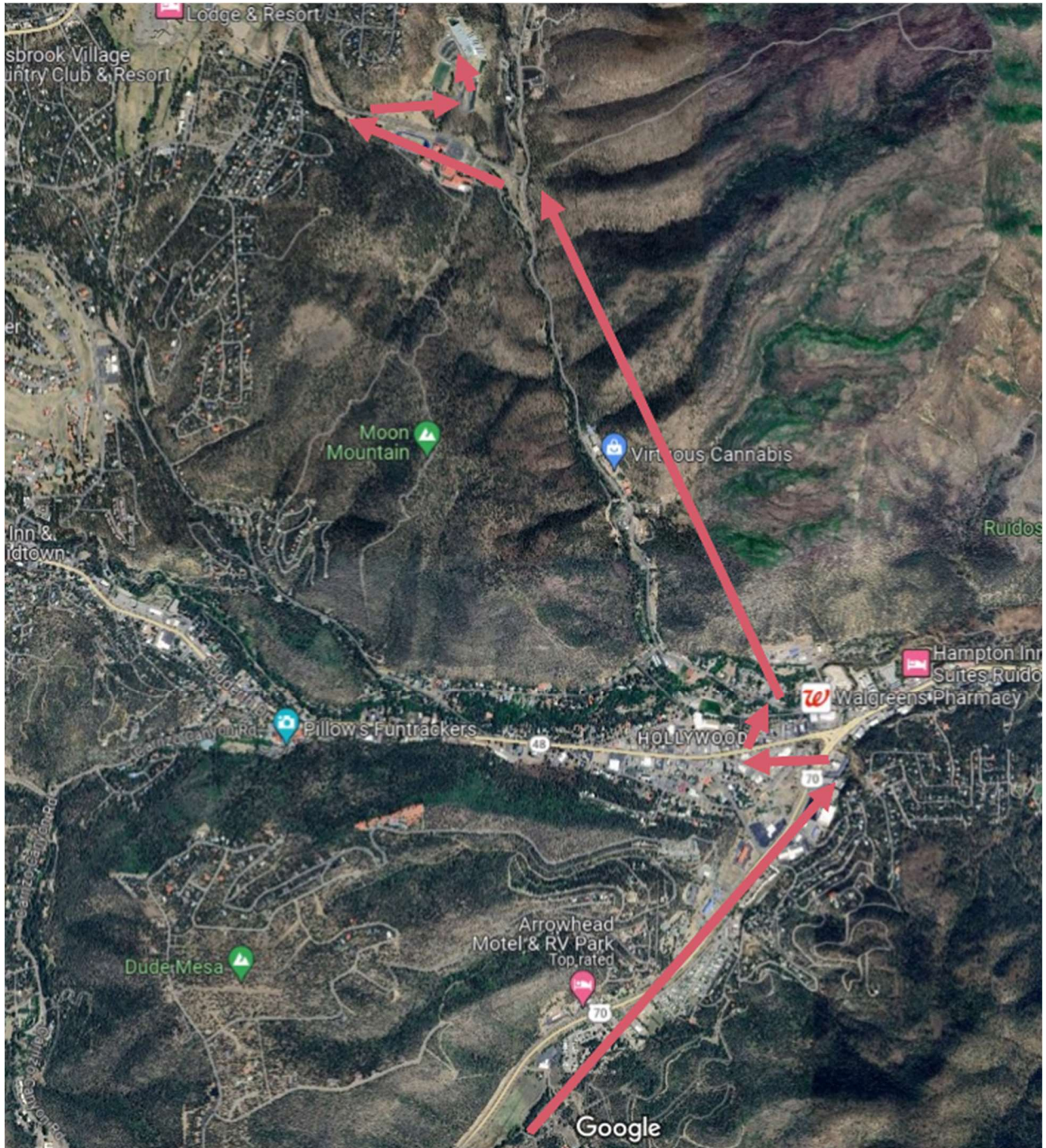
Centennial HS, Las Cruces HS, Mayfield HS, Organ Mountain HS

The location indicated in Dragonfly is not quite correct – it directs to the rear of Mayfield High School, north of Bruins Lane.

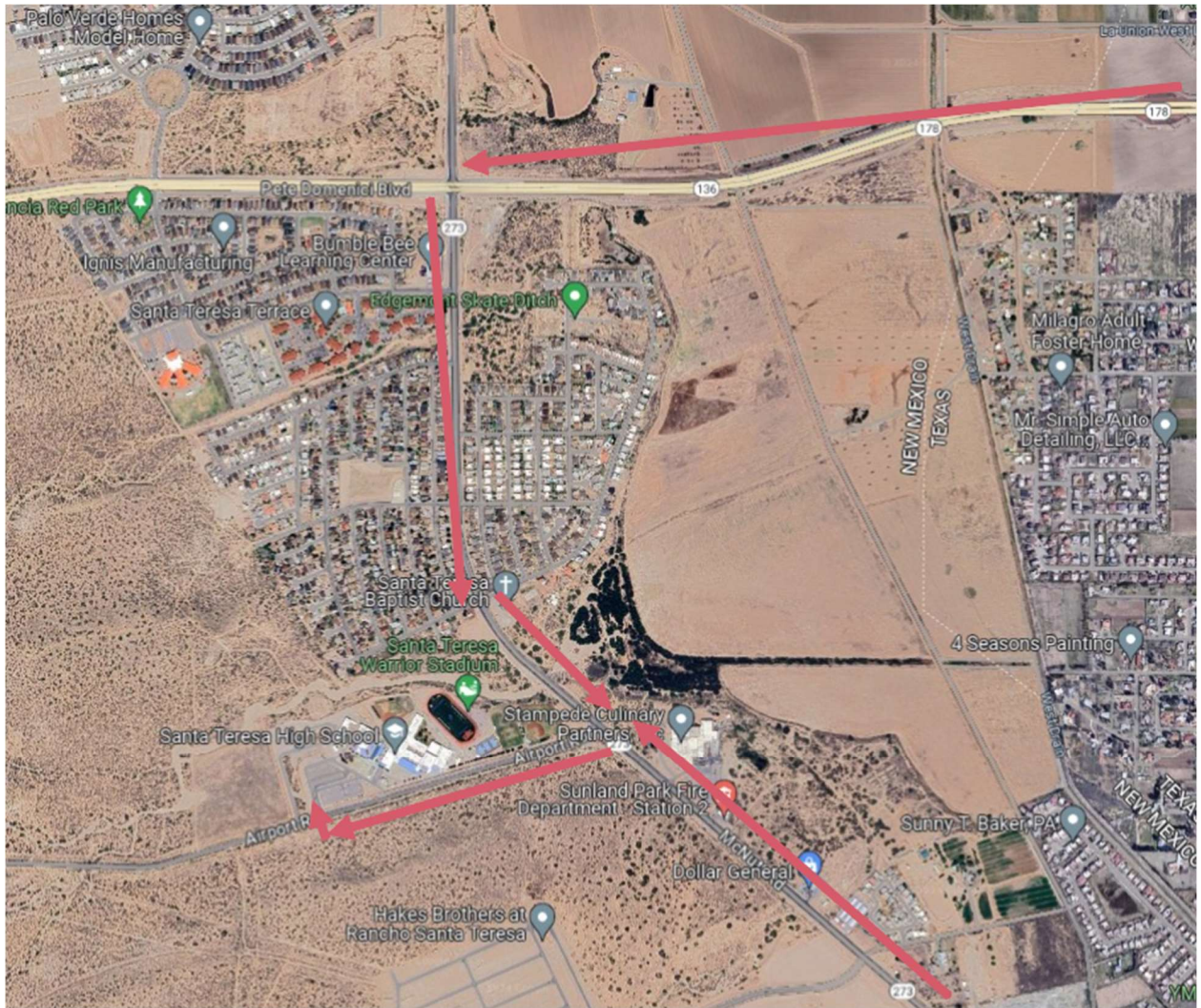


Ruidoso

The venue is Ruidoso Middle School, on the hill above the high school. Take the right turn just past the McDonalds/Walgreens and then turn left on Gavilan Canyon Road.

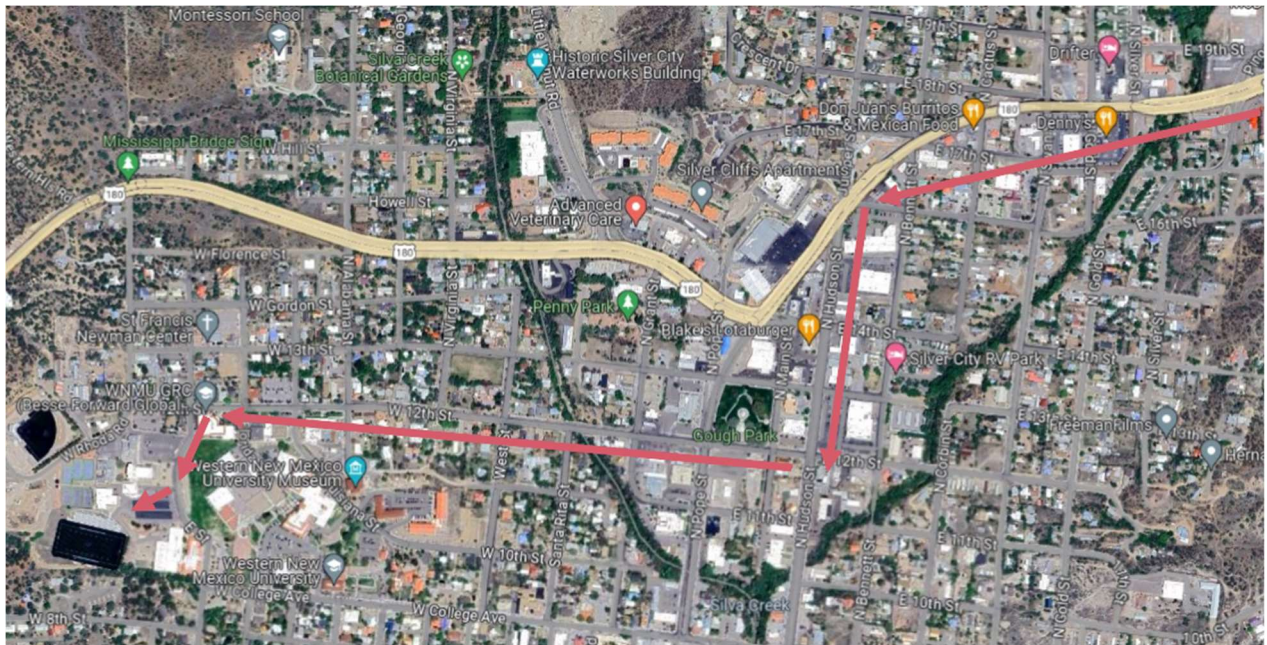


Santa Teresa



Silver City

As of 8/4/24, it is unclear which venues will be used in Silver City. It is likely that most games will be held at the Ben Altamirano Complex on the eastern edge of town. Some games—perhaps District games in the second half of the season—may be played at the WNMSU football field (second map).



Truth or Consequences (Hot Springs High School)

Take the I25 exit at the north end of TorC. Park in the dirt lot at the north end of the field.

